



CENTRE FOR  
INVASIVE SPECIES SOLUTIONS

**RESEARCH,  
DEVELOPMENT  
AND COMMUNITY  
ENGAGEMENT:  
FIVE YEARS  
OF SUCCESS**

# CENTRE FOR INVASIVE SPECIES SOLUTIONS

RESEARCH, DEVELOPMENT AND COMMUNITY ENGAGEMENT

1 JULY 2017 TO 30 JUNE 2022



## The problem

### Invasive species decrease agricultural productivity

- The cost and damage from vertebrate animals is about \$600 million/year<sup>1</sup>
- The cost and damage from weeds is about \$5 billion/year<sup>2</sup>

### Invasive species are the #1 pressure on Australia's threatened species.<sup>3</sup>

They have a high or medium impact on 42% of nationally listed threatened species<sup>4</sup>



## The solution

The Centre for Invasive Solutions is a national collaborative research, development and engagement organisation formed to tackle the ongoing threat to Australia from invasive species. We create new technologies and innovations that target invasive species and support the adoption of best management practices across Australia.

### Member and partner organisations:

- 9 Governments
- 1 CSIRO
- 5 Universities
- 62 Institutions involved as third parties to our research
- 2 Research and development corporations
- 5 Industry, NRM and conservation NGOs development corporations

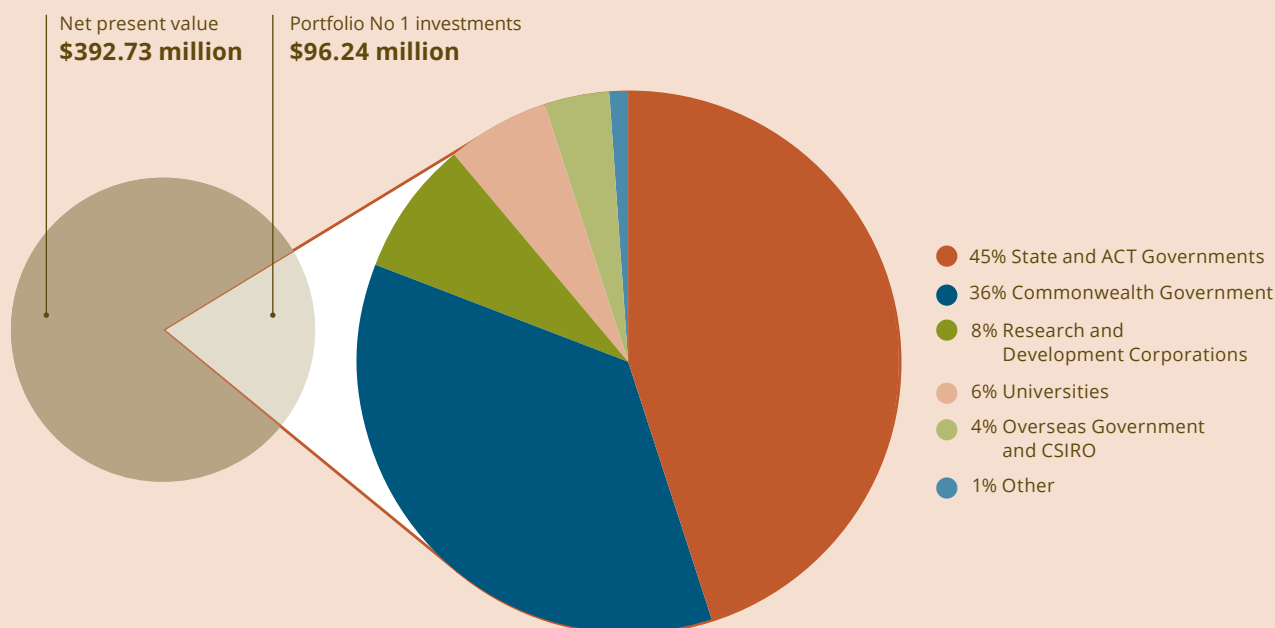


## A Significant Return on Investment *Talia Hardaker, Acre Economics*

The Centre delivered a **5.1 to 1 Benefit-Cost Ratio** return on investment over five years..

The leveraging ratio for the Commonwealth Government's investment in Portfolio No 1 was **2.97:1**

Portfolio No 1 Total Expected Net Benefits **\$488.97 million**



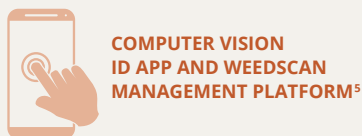
## Research achievements as at 1 JUNE 2023

### PROJECTS



## Development achievements as at 30 JUNE 2022

### NEW TOOLS

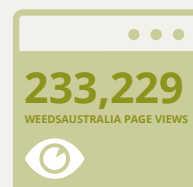
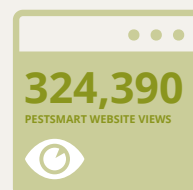
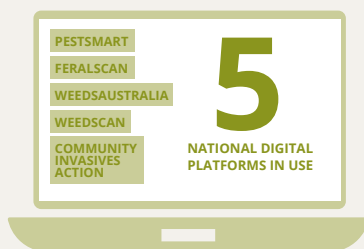


## Engagement achievements as at 30 JUNE 2022

### NATIONAL COORDINATORS



### DIGITAL TECHNOLOGIES



Strategic pest management outcomes enhanced by the data collection undertaken by 623 pest management groups using FeralScan, and by connecting these groups with government land managers.

### NEW CURRICULUM





CENTRE FOR  
INVASIVE SPECIES SOLUTIONS

**CENTRE FOR  
INVASIVE SPECIES SOLUTIONS**

Building 22 University of Canberra  
University Drive South,  
BRUCE ACT 2535

+61 2 6201 2887

communications@invasives.com.au

**INVASIVES.COM.AU  
PESTSMART.ORG.AU  
WEEDS.ORG.AU**

**FOOTNOTES**

- 1 McLeod, R. (2016). Cost of Pest Animals in NSW and Australia, 2013-14. eSYS Development Pty Ltd. Report prepared for the NSW Natural Resources Commission.
- 2 McLeod, R. (2018). Annual Costs of Weeds in Australia. eSYS Development Pty Ltd. Published by the Centre for Invasive Species Solutions, Canberra, Australia.
- 3 Kearney, S. G., Carwardine, J., Reside, A. E., Fisher, D. O., Maron, M., Doherty, T. S., ... & Wintle, B. A. (2019). The threats to Australia's imperilled species and implications for a national conservation response. *Pacific Conservation Biology*, 25(3), 328-328.
- 4 Ward M, Carwardine J, Yong CJ, Watson JE, Silcock J, Taylor GS, et al. A national scale dataset for threats impacting Australia's imperilled flora and fauna. *Ecol Evol*. 2021.
- 5 Delivered through a Portfolio No 1 aligned project.
6. Delivered through both Portfolio No 1 and a Portfolio No 1 aligned project.

**IMAGES**

**Front cover** Eloide Modave doing laboratory work for her molecular biology PhD.

Dr Eloide Modave studied the impact of introduced predators on Tasmanian fauna doing genetics on scats (animal droppings) as part of Centre's Balanced Researcher Program.

**Back cover** Rabbits are a major food source for feral cats, a species that has been the primary contributor to over two-thirds of the 34 mammal species that have become extinct since European settlement.

Feral cats also spread a disease called toxoplasma in sheep, goats, pigs and poultry that reduces birth rates.

**Image credit** Simon Ferguson.

